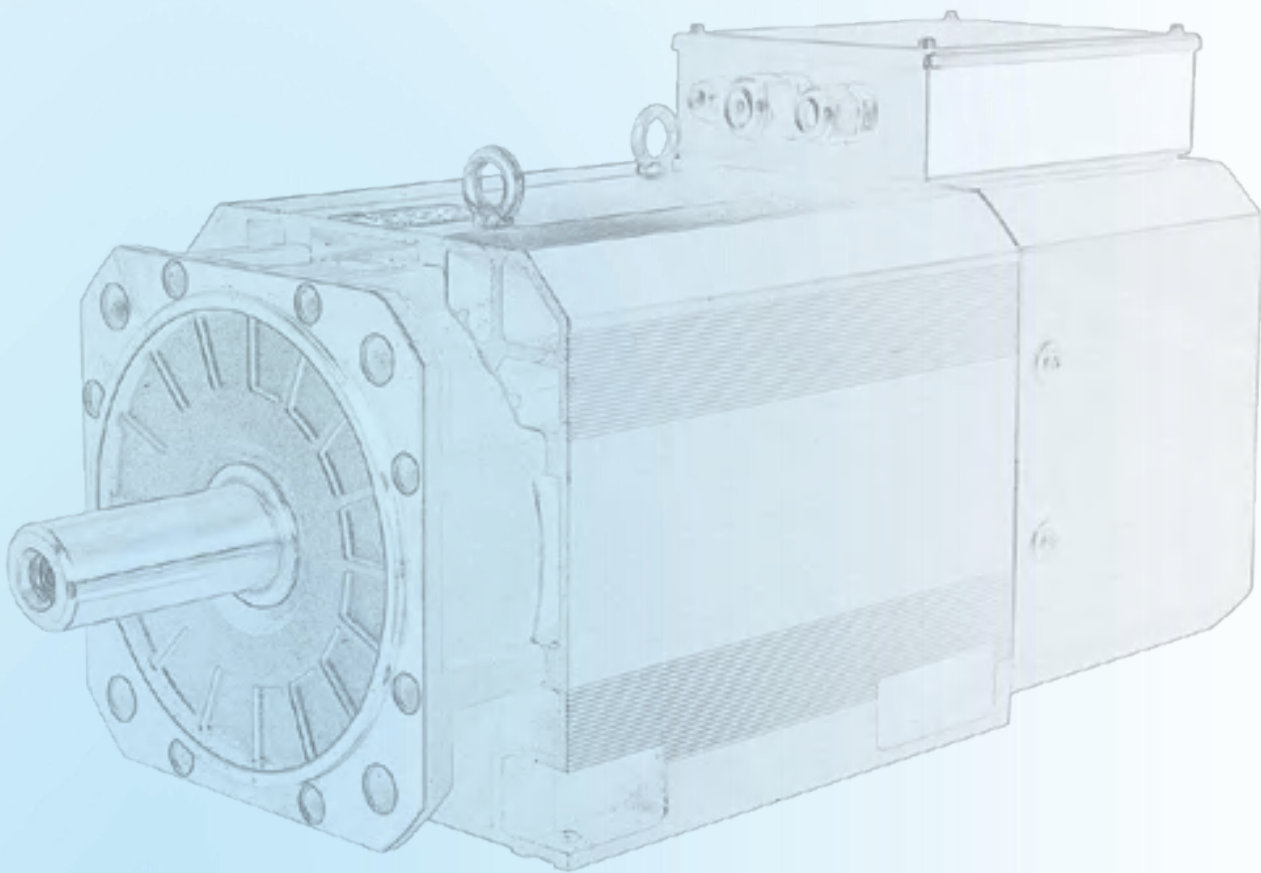


SINEE Automated Production and Life

Permanent Magnet Synchronous Servo Motor

STOCK CODE: 688395



Shenzhen Sine Electric Co., Ltd.

ABOUT US

Established

2003

Sales Service
Center

28

Joint Warranty
ServiceUnit

100+

Employee

500+

Motor Drive Control System Solution Provider

Since establishment in 2003, Shenzhen Sine Electric Co., Ltd. (Sine Electric) has focused on the research and development, production and sales of motor drive and control system products in the field of industrial automation, with the vision of "automated production and life", and continues to provide users with valuable products and services.

The company was listed on the Science and Technology Innovation Board of the Shanghai Stock Exchange in 2021 (stock code: 688395), and currently has built R&D, production and service bases in Shenzhen, Wuhan and Wuxi.





Culture



Vision

Automated production and life



Business

Motor drive and control system solution provider



Customers

Mechanical equipment manufacturers, distributors etc.



Competitiveness

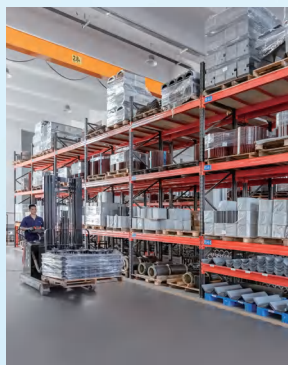
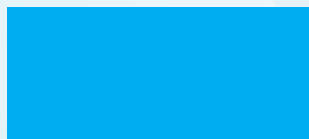
Industry market solutions and customer customization

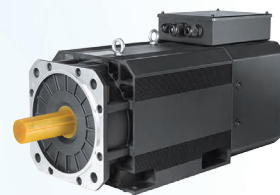


BUSINESS PHILOSOPHY

Customer-centric, Achieving Synchronous Growth of Own Value& Customer Value

Production





Contents

About Us	01
----------	----

Production	03
------------	----

Part 1 Air Cooling Servo Series

SHA-165 Air Cooling	09
---------------------	----

SHA-220 Air Cooling	10
---------------------	----

SHA-265 Air Cooling	11
---------------------	----

SHA-360 Air Cooling	12
---------------------	----

SHA-500 Air Cooling	13
---------------------	----

SHA-620 Air Cooling	14
---------------------	----

Part 2 Liquid Cooling Servo Series

SHB-380 Liquid Cooling	15
------------------------	----

SHB-470 Liquid Cooling	16
------------------------	----

SHB-520 Liquid Cooling	17
------------------------	----

SHB-680 Liquid Cooling	18
------------------------	----

Part 3 Hydraulic Air-cooled Servo Series

SHC-165 Hydraulic Air-cooled	19
------------------------------	----

SHC-220 Hydraulic Air-cooled	20
------------------------------	----

SHC-265 Hydraulic Air-cooled	21
------------------------------	----

SHC-360 Hydraulic Air-cooled	22
------------------------------	----

SINEE | 正弦电气

变频器 | 一体化专机 | 伺服系统 | 新能源

PMSM

After years of accumulation of motor technology, we are committed to creating permanent magnet synchronous motors with high power density, high efficiency and high power factor.

Italian permanent magnet technology, inheriting European quality, safe and reliable

Small size, light weight, small vibration, low noise, small temperature rise and low comprehensive energy consumption.

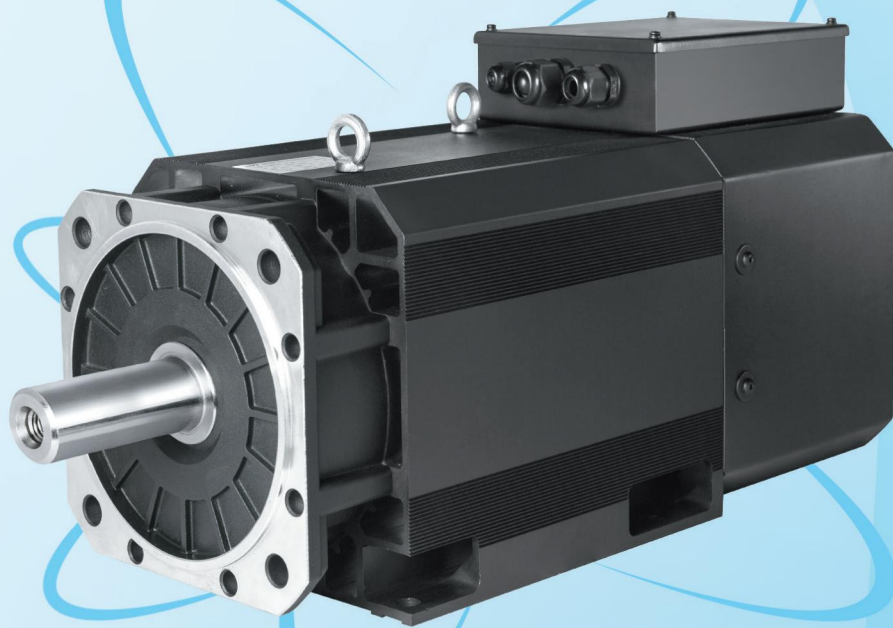
High efficiency, national level 1 energy efficiency standard and the European IE5 energy efficiency level.

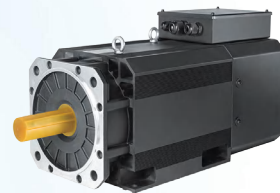
High power factor, and the motor power factor is close to 1, which can greatly reduce the amount of capacitor compensation.

Motor is made of high-grade raw materials and top-grade rare earth materials, with a long service life.

Optimized electromagnetic design ensures low electromagnetic noise, smooth and efficient operation

High power density, wide high efficiency range, smooth senseless synchronous speed, energy saving and improved terminal product quality.

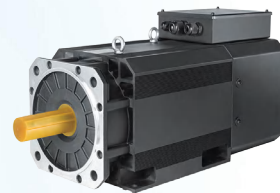




Textile Chemical Fiber	Printing&Packaging	Fan&Pump	Other Industry

Product Displays





SHA Series PMSM Model Rules

SHA-220L-7R5-10-3 A1 48Y-B3-B DQ F2 H-XX

① ② ③ ④ ⑤ ⑥ ⑦ ⑧ ⑨ ⑩ ⑪ ⑫ ⑬

- ① SHA stands for general-purpose air-cooled PMSM; SHB stands for liquid-cooled PMSM; SHC stands for hydraulic air-cooled PMSM
- ② Frame number, 220L indicates the frame number of the motor. The frame numbers of the SHA series are 165, 220, 265, 360, 520, 620, the frame numbers of the SHB series are 380, 470, 520, 680, and the frame numbers of the SHC series are 165, 220, 265, 360. The frame numbers of 220L and 220H are the same, which means the flange size is the same, but other installation dimensions are different
- ③ Motor rated power, 7R5 means 7.5kW, 011 means 11kW, 132 means 132kW
- ④ Motor rated speed, 07 means 750r/min, 10 means 1000r/min, 15 means 1500r/min, 17 means 1700r/min, 30 means 3000r/min
- ⑤ Motor voltage level, 3 means three-phase 380V, 2 means three-phase 220V
- ⑥ A1 means a 1024-line incremental differential encoder, R1 means a 1-pole rotary transformer, N means no encoder, and NY means an encoder-free shaft with a built-in fan.
- ⑦ 48 means the shaft diameter of 48mm, X means the smooth axis, and Y means the keyway.
- ⑧ Installation method, B3 means horizontal installation, B5 means vertical installation, B35 means horizontal and vertical installation
- ⑨ None means no brake. B means brake power DC 24V, B2 means brake power single-phase AC 220V, B3 means brake power AC 380V. (Motors with rated torque of 70NM and below are equipped with B brakes, and motors with rated torque of above 70NM are equipped with B3 brakes.)
- ⑩ DQ means the wiring is at the top front of the junction box, YQ means the wiring is at the right front of the junction box, and ZQ means the wiring is at the left front of the junction box.
- ⑪ F2 means single-phase AC 220V fan, and F4 means three-phase AC 415V fan. (For 265 base and above, use F4 fan, and for 265 base and below, use F2 fan.)
- ⑫ H means the encoder aviation socket outlet. None means the European standard wiring terminal.
- ⑬ XX means customized

PMSM Basic Specifications

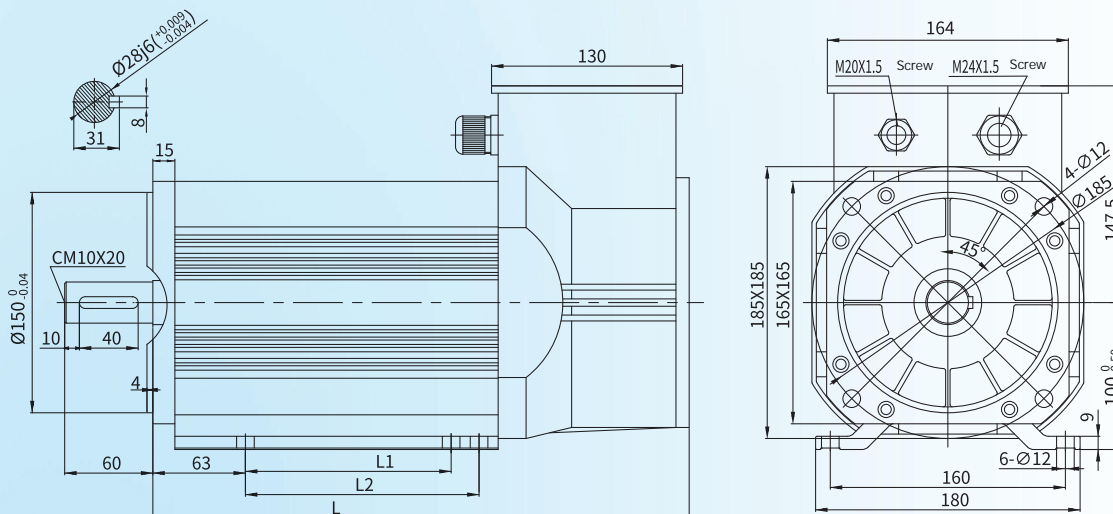
- ◆ Power range: 1.1kW-800kW
- ◆ Rated speed: 500-3000r/min
- ◆ Installation method: B3/B5/B35
- ◆ Insulation level :F
- ◆ Noise: less than 70dB(A)
- ◆ Vibration level: S
- ◆ Ambient temperature: -15°C to 40°C
- ◆ Ambient humidity: Relative humidity below 80% (no condensation)
- ◆ Protection level: IP55



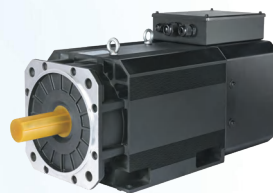
Specifications

Model Specification	Rated Power kW	Speed r/min		Freq. Hz	Vol. V	Current A		Torque Nm		Back EMF (V/rated speed)	Efficiency 100%	Rotor inertia kg.cm²
		Rated speed	Max. speed	Rated Freq.	Rated Vol.	Rated Current	Max. Current	Rated Torque	Max. Torque			
SHA-165S-1R1-07-3*_**	1.1	750	900	50	380	2.5	3	14	17	322	84.0	58
SHA-165M-1R5-07-3*_**	1.5			50	380	3.2	3.84	19	23	323	85.5	78
SHA-165N-2R2-07-3*_**	2.2			50	380	4.5	5.4	28	34	330	87.2	107
SHA-165N-3R0-07-3*_**	3			50	380	6	7.2	38	46	317	88.4	126
SHA-165S-1R5-10-3*_**	1.5	1000	1200	66.7	380	3.2	3.8	14	17	324	88.4	58
SHA-165N-2R2-10-3*_**	2.2			66.7	380	4.5	5.4	21	25	330	89.7	107
SHA-165N-3R0-10-3*_**	3			66.7	380	6	7.2	29	34	325	90.6	126
SHA-165N-4R0-10-3*_**	4			66.7	380	8	9.6	38	46	325	91.4	126
SHA-165S-2R2-15-3*_**	2.2	1500	1800	100	380	4.5	5.4	14	17	328	91.4	58
SHA-165M-3R0-15-3*_**	3			100	380	6	7.2	19	23	327	92.1	78
SHA-165N-4R0-15-3*_**	4			100	380	8	9.6	25	30	330	92.8	107
SHA-165N-5R5-15-3*_**	5.5			100	380	11	13.2	35	42	329	93.4	126
SHA-165S-4R0-30-3*_**	4	3000	3600	200	380	7	8.4	13	15	327	91.8	58
SHA-165M-5R5-30-3*_**	5.5			200	380	10	12	18	21	330	92.6	78
SHA-165N-7R5-30-3*_**	7.5			200	380	13.5	16.2	24	29	330	93.3	107
SHA-165N-011-30-3*_**	11			200	380	20	24	35	42	329	94.0	126

Installation Dimensions



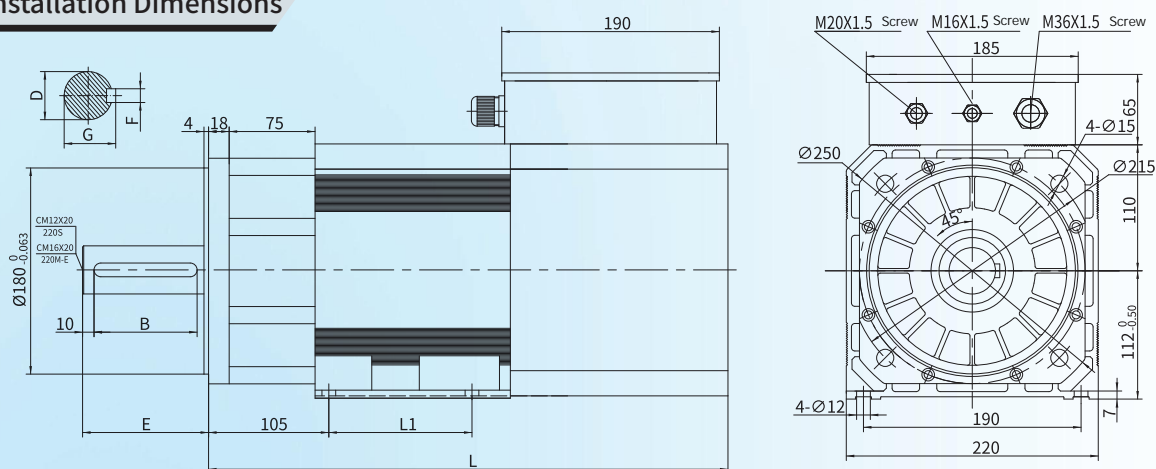
Frame Number	L	L1	L2
165S	310	70	84
165M	335	95	112
165N	365	140	159



Specifications

Model Specification	Rated Power kW	Speed r/min		Freq. Hz	Vol. V	Current A		Torque Nm		Back EMF (V/rated speed)	Efficiency 100%	Rotor inertia kg.cm²
		Rated speed	Max. speed	Rated Freq.	Rated Vol.	Rated Current	Max. Current	Rated Torque	Max. Torque			
SHA-220S-3R0-07-3*_*_*	3	750	900	62.5	380	6	7.2	38	46	318	88.4	166
SHA-220M-4R0-07-3*_*_*	4			62.5	380	8	9.6	51	61	325	89.4	248
SHA-220L-5R5-07-3*_*_*	5.5			62.5	380	11	13.2	70	84	325	90.4	331
SHA-220H-7R5-07-3*_*_*	7.5			62.5	380	15	18	96	115	326	91.3	414
SHA-220E-011-07-3*_*_*	11			62.5	380	21	25.2	140	168	328	92.2	497
SHA-220S-4R0-10-3*_*_*	4	1000	1200	83.3	380	8	9.6	38	46	320	91.4	166
SHA-220M-5R5-10-3*_*_*	5.5			83.3	380	11	13.2	53	63	325	92.2	248
SHA-220L-7R5-10-3*_*_*	7.5			83.3	380	15	18	72	86	325	92.9	331
SHA-220H-011-10-3*_*_*	11			83.3	380	21	25.2	105	126	323	93.7	414
SHA-220E-015-10-3*_*_*	15			83.3	380	29	34.8	143	172	324	94.3	497
SHA-220S-7R5-15-3*_*_*	7.5	1500	1800	125	380	15	18	48	57	322	94.0	166
SHA-220M-011-15-3*_*_*	11			125	380	21	25.2	70	84	323	94.6	248
SHA-220L-015-15-3*_*_*	15			125	380	29	34.8	96	115	324	95.1	331
SHA-220H-018-15-3*_*_*	18.5			125	380	34	40.8	118	141	326	95.3	414
SHA-220E-022-15-3*_*_*	22			125	380	41	49.2	140	168	328	95.5	497
SHA-220S-015-30-3*_*_*	15	3000	3600	250	380	27	32.4	48	57	318	94.5	166
SHA-220M-018-30-3*_*_*	18.5			250	380	33	39.6	59	71	328	94.9	248
SHA-220L-022-30-3*_*_*	22			250	380	39	46.8	70	84	324	95.1	331
SHA-220H-030-30-3*_*_*	30			250	380	53	63.6	96	115	335	95.5	414
SHA-220E-037-30-3*_*_*	37			250	380	65	78	118	141	338	95.8	497

Installation Dimensions



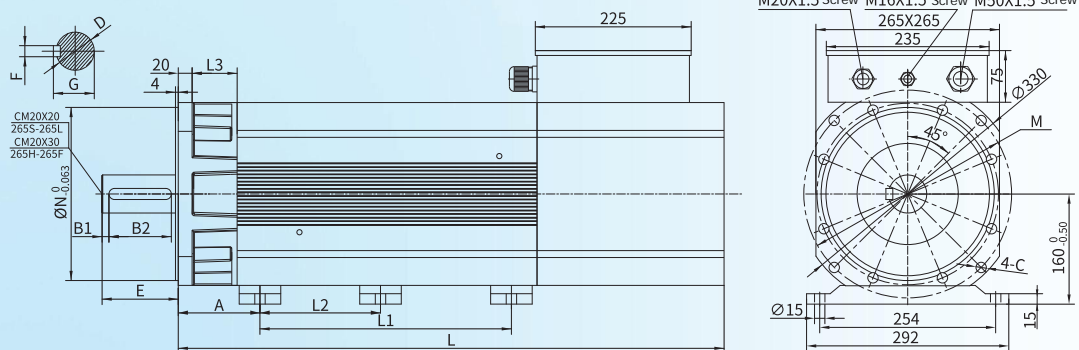
Frame Number	L1	L	D	F	G	E	B
220S	95	430	Ø38K6 ($+0.018$ $+0.002$)	10	41	80	60
220M	125	460	Ø42K6 ($+0.018$ $+0.002$)	12	45	110	90
220L	175	510	Ø42K6 ($+0.018$ $+0.002$)	12	45	110	90
220H	225	560	Ø48K6 ($+0.018$ $+0.002$)	14	51.5	110	90
220E	270	620	Ø48K6 ($+0.018$ $+0.002$)	14	51.5	110	90



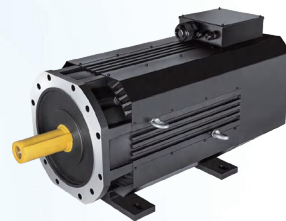
Specifications

Model Specification	Rated Power kW	Speed r/min		Freq. Hz	Vol. V	Current A		Torque Nm		Back EMF	Efficiency	Rotor inertia
		Rated speed	Max. speed	Rated Freq.	Rated Vol.	Rated Current	Max. Current	Rated Torque	Max. Torque	(V/rated speed)	100%	kg.cm²
SHA-265S-7R5-07-3*_*_*	7.5	750	900	62.5	380	15	18	96	115	358	91.3	644
SHA-265M-011-07-3*_*_*	11			62.5	380	21	25.2	140	168	355	92.2	966
SHA-265L-015-07-3*_*_*	15			62.5	380	29	34.8	191	229	347	92.9	1126
SHA-265H-018-07-3*_*_*	18.5			62.5	380	34	40.8	236	283	358	93.3	1287
SHA-265E-022-07-3*_*_*	22			62.5	380	41	49.2	280	336	351	93.6	1609
SHA-265F-030-07-3*_*_*	30			62.5	380	55	66	382	458	338	94.1	1931
SHA-265S-011-10-3*_*_*	11	1000	1200	83.3	380	21	25.2	105	126	353	93.7	644
SHA-265M-015-10-3*_*_*	15			83.3	380	29	34.8	143	172	352	94.3	966
SHA-265L-018-10-3*_*_*	18.5			83.3	380	34	40.8	177	212	353	94.6	1126
SHA-265H-022-10-3*_*_*	22			83.3	380	41	49.2	210	252	359	94.9	1287
SHA-265E-030-10-3*_*_*	30			83.3	380	55	66	287	344	339	95.3	1609
SHA-265F-037-10-3*_*_*	37			83.3	380	68	81.6	353	424	352	95.6	1931
SHA-265G-045-10-3*_*_*	45	1500	1800	83.3	380	83	99.6	430	516	347	95.8	2253
SHA-265S-018-15-3*_*_*	18.5			125	380	34	40.8	118	141	358	95.3	644
SHA-265M-022-15-3*_*_*	22			125	380	41	49.2	140	168	355	95.5	966
SHA-265L-030-15-3*_*_*	30			125	380	55	66	191	229	357	95.9	1126
SHA-265H-037-15-3*_*_*	37			125	380	68	81.6	236	283	363	96.1	1287
SHA-265E-045-15-3*_*_*	45			125	380	83	99.6	287	344	357	96.3	1609
SHA-265F-055-15-3*_*_*	55	3000	3600	125	380	100	120	350	420	363	96.5	1931
SHA-265G-075-15-3*_*_*	75			125	380	135	162	478	573	352	96.7	2253
SHA-265S-030-30-3*_*_*	30			250	380	53	63.6	96	115	353	95.5	644
SHA-265M-037-30-3*_*_*	37			250	380	65	78	118	141	355	95.9	966
SHA-265L-045-30-3*_*_*	45			250	380	79	94.8	143	172	357	96.0	1126
SHA-265H-055-30-3*_*_*	55			250	380	97	116.4	175	210	363	96.2	1287
SHA-265E-075-30-3*_*_*	75	3000	3600	250	380	132	158.4	239	287	358	96.5	1609
SHA-265F-090-30-3*_*_*	90			250	380	158	189.6	287	344	363	96.6	1931
SHA-265G-110-30-3*_*_*	110			250	380	193	231.6	350	420	347	96.8	2253

Installation Dimensions



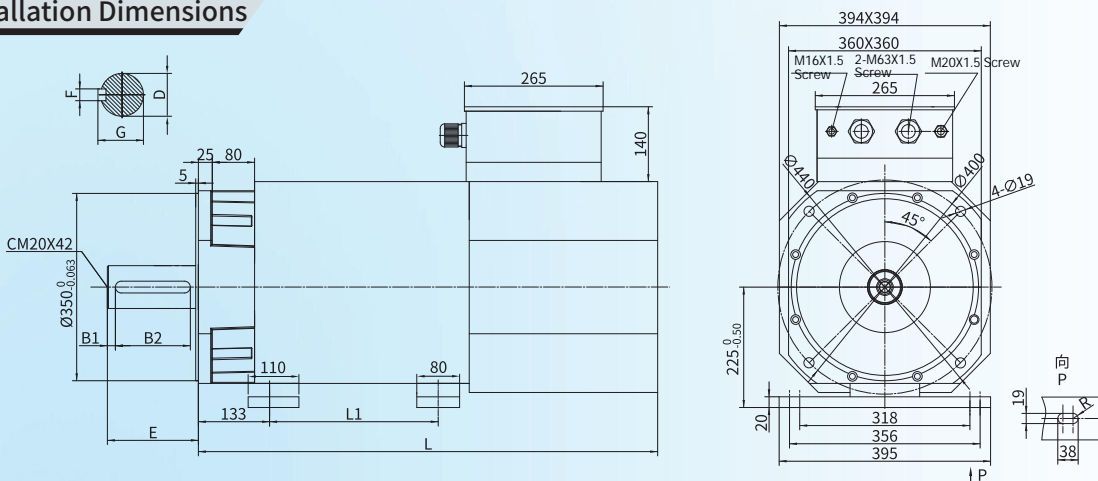
Frame Number	N	A	L	L1	L2	L3	D	F	G	E	B1	B2	M	C
265S	230	108	530	133	/	55	Ø48k6(^{+0.018} / _{+0.002})	14	51.5	110	10	90	Ø265	Ø15
265M			558	173	/	55	Ø48k6(^{+0.018} / _{+0.002})							
265L			593	208	/	55	Ø55m6(^{+0.030} / _{+0.011})							
265H	250	118	675	243	/	65	Ø60m6(^{+0.030} / _{+0.011})	18	64	140	15	110	Ø300	Ø19
265E			725	293	/	65	Ø60m6(^{+0.030} / _{+0.011})	18	64					
265F			795	363	174	65	Ø65m6(^{+0.030} / _{+0.011})	18	69					
265G			825	393	189	65	Ø65m6(^{+0.030} / _{+0.011})	18	69					



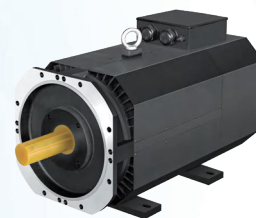
Specifications

Model Specification	Rated Power kW	Speed r/min		Freq. Hz	Vol. V	Current A		Torque Nm		Back EMF	Efficiency	Rotor inertia
		Rated speed	Max. speed	Rated Freq.	Rated Vol.	Rated Current	Max. Current	Rated Torque	Max. Torque	(V/rated speed)	100%	kg.cm²
SHA-360S-030-07-3*_**	30	750	900	50	380	55	66	382	458	337	94.1	2923
SHA-360M-037-07-3*_**	37			50	380	35	42	471	565	340	94.4	3672
SHA-360L-045-07-3*_**	45			50	380	83	99.6	573	688	341	94.7	4496
SHA-360H-055-07-3*_**	55			50	380	100	120	700	840	344	94.9	5321
SHA-360E-065-07-3*_**	65			50	380	123	147.6	828	994	341	95.1	5321
SHA-360S-037-10-3*_**	37	1000	1200	66.7	380	68	81.6	353	424	339	95.6	2923
SHA-360M-045-10-3*_**	45			66.7	380	83	99.6	430	516	337	95.8	3672
SHA-360L-055-10-3*_**	55			66.7	380	100	120	525	630	337	96.0	4496
SHA-360H-075-10-3*_**	75			66.7	380	135	162	716	860	339	96.3	5321
SHA-360E-090-10-3*_**	90			66.7	380	159	190.8	860	1031	341	96.5	6745
SHA-360S-055-15-3*_**	55	1500	1800	100	380	100	120	350	420	345	96.5	2923
SHA-360M-075-15-3*_**	75			100	380	135	162	478	573	340	96.7	3672
SHA-360L-090-15-3*_**	90			100	380	159	190.8	573	688	341	96.9	4496
SHA-360H-110-15-3*_**	110			100	380	193	231.6	700	840	358	97.0	5321
SHA-360E-132-15-3*_**	132			100	380	230	276	840	1008	341	97.1	6745
SHA-360S-090-30-3*_**	90	3000	3600	200	380	159	190.8	287	344	345	96.6	2923
SHA-360M-110-30-3*_**	110			200	380	193	231.6	350	420	351	96.8	3672
SHA-360M-132-30-3*_**	132			200	380	232	278.4	420	504	351	96.9	3672
SHA-360L-160-30-3*_**	160			200	380	281	337.2	509	611	354	97.0	4496
SHA-360H-185-30-3*_**	185			200	380	323	387.6	589	707	359	97.1	5321
SHA-360H-200-30-3*_**	200			200	380	349	418.8	637	764	351	97.2	5321
SHA-360E-220-30-3*_**	220			200	380	380	456	700	840	341	97.2	6745

Installation Dimensions



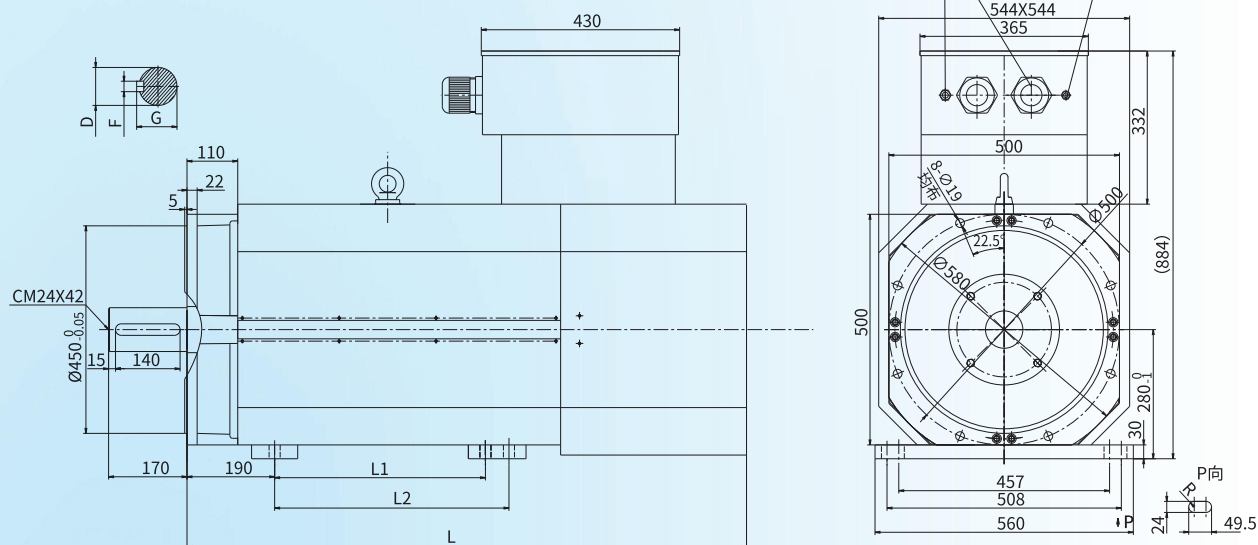
Frame Number	L	L1	D	F	G	E	B1	B2
360S	815	265	Ø65m6 ($+0.030$ $+0.011$)	18	69	140	15	110
360M	865	315	Ø75m6 ($+0.030$ $+0.011$)	20	79.5	140	7.5	125
360L	915	365	Ø75m6 ($+0.030$ $+0.011$)	20	79.5	140	7.5	125
360H	975	425	Ø80m6 ($+0.030$ $+0.011$)	22	85	170	15	140
360E	1045	495	Ø80m6 ($+0.030$ $+0.011$)	22	85	170	15	140



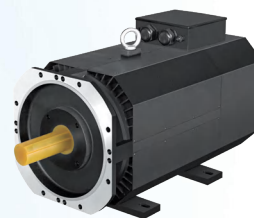
Specifications

Model Specification	Rated Power kW	Speed r/min		Freq. Hz	Vol. V	Current A		Torque Nm		Back EMF	Efficiency	Rotor inertia
		Rated speed	Max. speed	Rated Freq.	Rated Vol.	Rated Current	Max. Current	Rated Torque	Max. Torque	(V/rated speed)	100%	kg.cm²
SHA-500S-055-07-3*_**	55	750	900	50	380	109	130.8	700	840	351	94.9	16693
SHA-500S-075-07-3*_**	75			50	380	135	162	955	1146	350	95.3	20487
SHA-500M-090-07-3*_**	90			50	380	159	190.8	1146	1375	349	95.5	24281
SHA-500L-110-07-3*_**	110			50	380	193	231.6	1400	1680	350	95.7	29592
SHA-500H-132-07-3*_**	132			50	380	230	276	1681	2017	349	95.9	37939
SHA-500S-075-10-3*_**	75	1000	1200	66.7	380	135	162	716	860	351	96.3	16693
SHA-500S-090-10-3*_**	90			66.7	380	159	190.8	860	1031	351	96.5	16693
SHA-500S-110-10-3*_**	110			66.7	380	193	231.6	1051	1261	359	96.6	20487
SHA-500L-132-10-3*_**	132			66.7	380	230	276	1261	1513	351	96.8	26557
SHA-500H-160-10-3*_**	160			66.7	380	276	331.2	1528	1834	351	96.9	33386
SHA-500H-185-10-3*_**	185	1500	1800	66.7	380	319	382.8	1767	2120	366	97.0	37939
SHA-500S-132-15-3*_**	132			100	380	230	276	840	1008	351	97.1	16693
SHA-500S-160-15-3*_**	160			100	380	276	331.2	1019	1223	350	97.2	20487
SHA-500M-185-15-3*_**	185			100	380	319	382.8	1178	1413	351	97.3	24281
SHA-500L-200-15-3*_**	200			100	380	345	414	1273	1528	349	97.4	26557
SHA-500L-220-15-3*_**	220			100	380	379	454.8	1401	1681	350	97.4	29592
SHA-500H-250-15-3*_**	250			100	380	430	516	1592	1910	351	97.4	33386
SHA-500H-280-15-3*_**	280			100	380	483	579.6	1783	2140	349	97.4	37939

Installation Dimensions



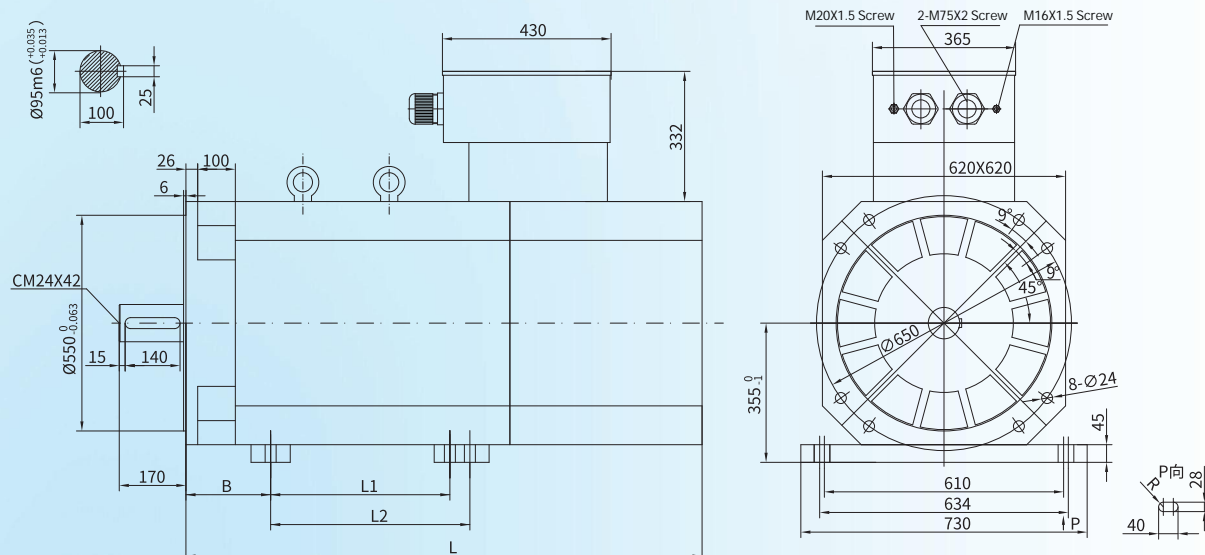
Frame Number	L	L1	L2	D	F	G
500S	1020	368	/	Ø80m6(^{+0.030} / _{+0.011})	22	85
500M	1080	419	/	Ø80m6(^{+0.030} / _{+0.011})	22	85
500L	1170	457	/	Ø80m6(^{+0.030} / _{+0.011})	22	85
500H	1220	457	508	Ø95m6(^{+0.035} / _{+0.013})	25	100



Specifications

Model Specification	Rated Power kW	Speed r/min		Freq. Hz	Vol. V	Current A		Torque Nm		Back EMF	Efficiency	Rotor inertia
		Rated speed	Max. speed	Rated Freq.	Rated Vol.	Rated Current	Max. Current	Rated Torque	Max. Torque	(V/rated speed)	100%	kg.cm²
SHA-620S-132-07-3*_**	132	750	900	50	380	230	276	1681	2017	327	95.9	50619
SHA-620S-160-07-3*_**	160			50	380	276	331.2	2037	2444	326	96.1	56243
SHA-620S-185-07-3*_**	185			50	380	319	382.8	2356	2827	323	96.3	62671
SHA-620M-200-07-3*_**	200			50	380	345	414	2547	3056	319	96.3	70706
SHA-620L-220-07-3*_**	220			50	380	379	454.8	2801	3361	344	96.3	81955
SHA-620S-160-10-3*_**	160	1000	1200	66.7	380	276	331.2	1528	1834	335	96.9	45798
SHA-620S-185-10-3*_**	185			66.7	380	319	382.8	1767	2120	327	97.0	50619
SHA-620S-200-10-3*_**	200			66.7	380	345	414	1910	2292	339	97.0	56243
SHA-620S-220-10-3*_**	220			66.7	380	379	454.8	2101	2521	323	97.0	62671
SHA-620M-250-10-3*_**	250			66.7	380	430	516	2388	2866	334	97.0	70706
SHA-620L-280-10-3*_**	280	1500	1800	66.7	380	483	579.6	2674	3209	317	97.0	81955
SHA-620S-250-15-3*_**	250			100	380	430	516	1592	1910	325	97.4	45798
SHA-620S-280-15-3*_**	280			100	380	483	579.6	1783	2140	329	97.4	50619
SHA-620S-315-15-3*_**	315			100	380	544	652.8	2006	2407	329	97.4	56243
SHA-620S-355-15-3*_**	355			100	380	625	750	2388	2866	323	97.4	62671
SHA-620M-400-15-3*_**	400	1500	1800	100	380	704	844.8	2547	3056	319	97.4	70706
SHA-620L-450-15-3*_**	450			100	380	792	950.4	2865	3438	320	97.4	81955

Installation Dimensions



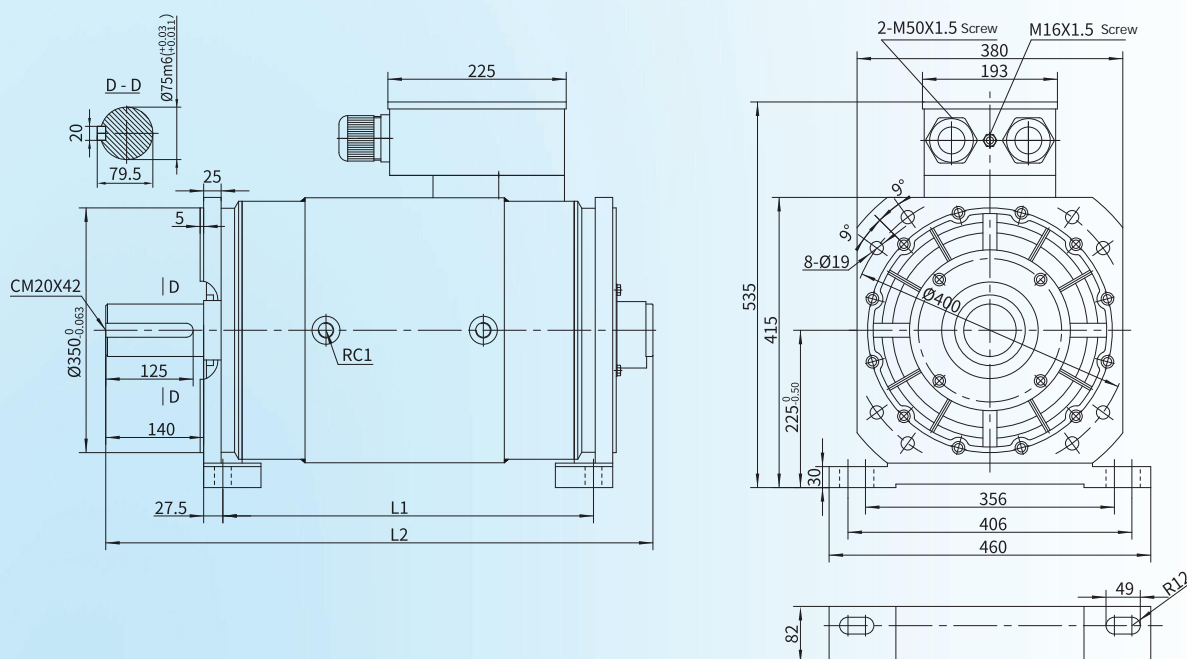
Frame Number	B	L1	L2	L
620S	216	457	508	1348
620M	216	457	508	1428
620L	254	500	560	1498



Specifications

Model Specification	Rated Power kW	Speed r/min		Freq. Hz	Vol. V	Current A		Torque Nm		Back EMF	Efficiency	Rotor inertia
		Rated speed	Max. speed	Rated Freq.	Rated Vol.	Rated Current	Max. Current	Rated Torque	Max. Torque	(V/rated speed)	100%	kg.cm²
SHB-380L-037-07-3*_**	37	750	900	50	380	68	81.6	471	565	328	94.4	2923
SHB-380L-045-07-3*_**	45			50	380	83	99.6	573	688	330	94.7	3672
SHB-380E-055-07-3*_**	55			50	380	100	120	700	840	328	94.9	4496
SHB-380L-037-10-3*_**	37	1000	1200	66.7	380	68	81.6	353	424	329	95.6	2248
SHB-380L-045-10-3*_**	45			66.7	380	83	99.6	430	516	328	95.8	2923
SHB-380L-055-10-3*_**	55			66.7	380	100	120	525	630	330	96.0	3672
SHB-380E-075-10-3*_**	75			66.7	380	135	162	716	860	320	96.3	4496
SHB-380E-090-10-3*_**	90			66.7	380	159	190.8	860	1031	319	96.5	5321
SHB-380L-055-15-3*_**	55	1500	1800	100	380	100	120	350	420	329	96.5	2248
SHB-380L-075-15-3*_**	75			100	380	135	162	478	574	328	96.7	2923
SHB-380L-090-15-3*_**	90			100	380	159	190.8	573	688	330	96.9	3672
SHB-380E-110-15-3*_**	110			100	380	193	231.6	700	840	328	97.0	4496
SHB-380E-132-15-3*_**	132			100	380	230	276	840	1008	329	97.1	5321

Installation Dimensions



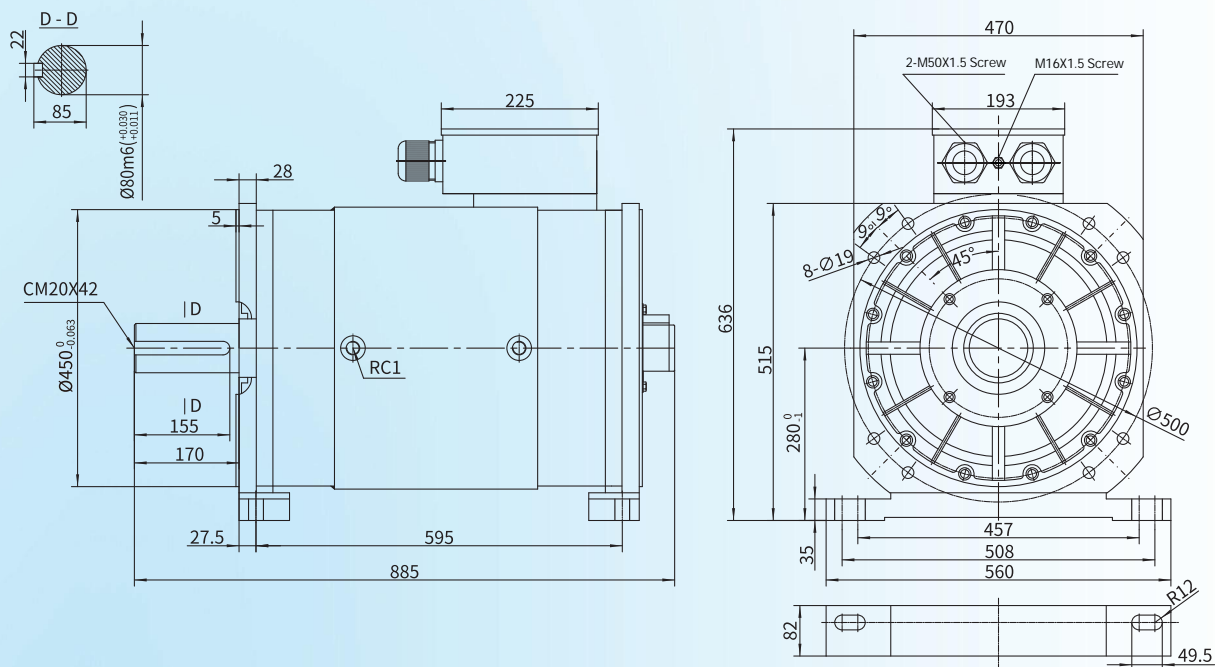
Frame Number	L2	L2
380L	530	790
360E	640	900



Specifications

Model Specification	Rated Power kW	Speed r/min		Freq. Hz	Vol. V	Current A		Torque Nm		Back EMF (V/rated speed)	Efficiency 100%	Rotor inertia kg.cm ²
		Rated speed	Max. speed	Rated Freq.	Rated Vol.	Rated Current	Max. Current	Rated Torque	Max. Torque			
SHB-470H-075-07-3*_*_*	75	750	900	50	380	135	162	955	1146	342	95.3	8815
SHB-470H-090-07-3*_*_*	90			50	380	159	190.8	1146	1375	342	95.5	10358
SHB-470H-110-07-3*_*_*	110			50	380	193	231.6	1401	1681	339	95.7	12782
SHB-470H-110-10-3*_*_*	110	1000	1200	66.7	380	193	231.6	1051	1261	325	96.6	8815
SHB-470H-132-10-3*_*_*	132			66.7	380	230	276	1261	1513	331	96.8	11019
SHB-470H-160-15-3*_*_*	160	1500	1800	100	380	276	331.2	1019	1223	342	97.2	8815
SHB-470H-185-15-3*_*_*	185			100	380	319	382.8	1178	1414	342	97.3	10358
SHB-470H-200-15-3*_*_*	200			100	380	345	414	1273	1528	338	97.4	11019
SHB-470H-220-15-3*_*_*	220			100	380	379	454.8	1401	1681	339	97.4	12782

Installation Dimensions

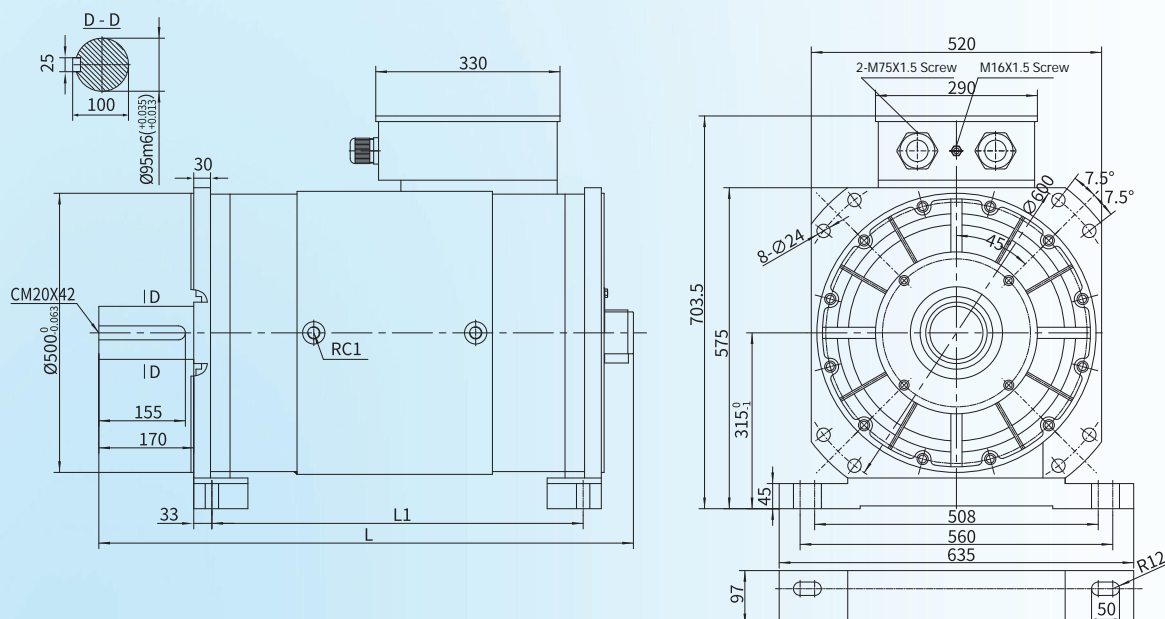




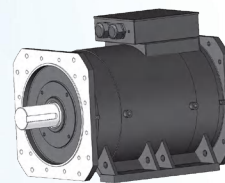
Specifications

Model Specification	Rated Power kW	Speed r/min		Freq. Hz	Vol. V	Current A		Torque Nm		Back EMF	Efficiency	Rotor inertia
		Rated speed	Max. speed	Rated Freq.	Rated Vol.	Rated Current	Max. Current	Rated Torque	Max. Torque	(V/rated speed)	100%	kg.cm²
SHB-520L-132-07-3*_**	132	750	900	50	380	230	276	1681	2017	340	95.9	23522
SHB-520L-160-07-3*_**	160			50	380	276	331.2	2037	2444	341	96.1	28833
SHB-520E-185-07-3*_**	185			50	380	319	382.8	2356	2827	342	96.3	37180
SHB-520E-200-07-3*_**	200			50	380	345	414	2547	3056	342	96.3	37180
SHB-520L-160-10-3*_**	160	1000	1200	66.7	380	276	331.2	1528	1834	346	96.9	19728
SHB-520L-185-10-3*_**	185			66.7	380	319	382.8	1767	2120	330	96.9	23522
SHB-520L-200-10-3*_**	200			66.7	380	345	414	1910	2292	329	97.0	28833
SHB-520E-220-10-3*_**	220			66.7	380	379	454.8	2101	2521	343	97.0	32672
SHB-520E-250-10-3*_**	250			66.7	380	430	516	2388	2866	359	97.0	37180
SHB-520L-250-15-3*_**	250	1500	1800	100	380	430	516	1592	1910	337	97.4	19728
SHB-520L-280-15-3*_**	280			100	380	483	579.6	1783	2140	340	97.4	23522
SHB-520L-315-15-3*_**	315			100	380	544	652.8	2006	2407	341	97.4	28833
SHB-520E-355-15-3*_**	355			100	380	625	750	2260	2712	343	97.4	32672
SHB-520E-400-15-3*_**	400			100	380	704	845	2547	3056	342	97.4	37180

Installation Dimensions



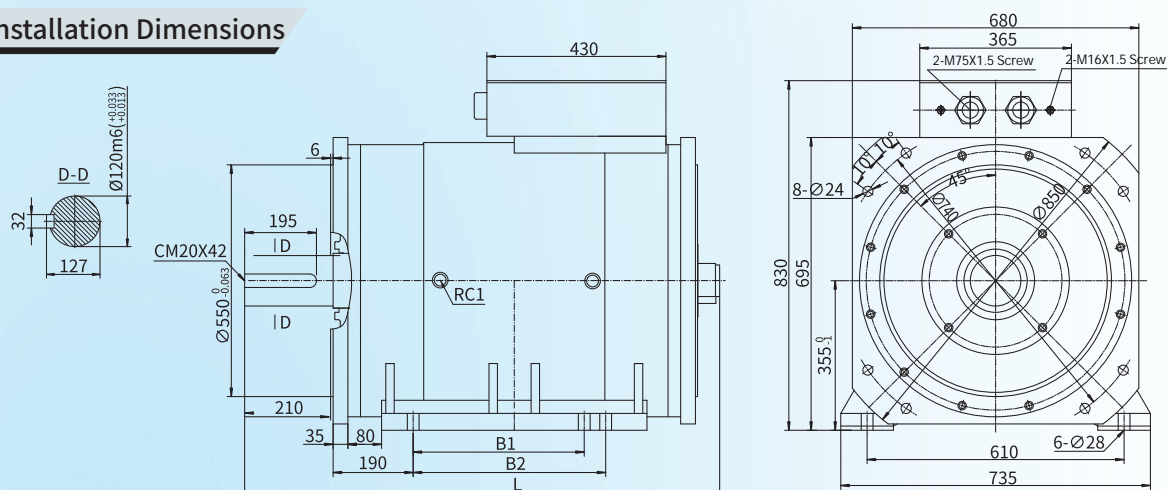
Frame Number	L1	L
520L	735	1035
520E	845	1145



Specifications

Model Specification	Rated Power kW	Speed r/min		Freq. Hz	Vol. V	Current A		Torque Nm		Back EMF	Efficiency	Rotor inertia
		Rated speed	Max. speed	Rated Freq.	Rated Vol.	Rated Current	Max. Current	Rated Torque	Max. Torque	(V/rated speed)	100%	kg.cm²
SHB-680L-200-07-3*_*_*	200	750	900	100	380	345	414	2547	3056	356	96.3	65193
SHB-680L-220-07-3*_*_*	220			100	380	379	455	2801	3362	352	96.3	74506
SHB-680L-250-07-3*_*_*	250			100	380	430	516	3183	3820	337	96.3	102446
SHB-680L-280-07-3*_*_*	280			100	380	483	580	3565	4278	337	96.3	102446
SHB-680H-315-07-3*_*_*	315			100	380	544	653	4011	4813	357	96.3	121073
SHB-680H-355-07-3*_*_*	355			100	380	625	750	4520	5424	357	96.3	121073
SHB-680H-400-07-3*_*_*	400			100	380	704	845	5093	6112	354	96.3	133490
SHB-680H-450-07-3*_*_*	450			100	380	792	950	5730	6876	361	96.3	152117
SHB-680L-280-10-3*_*_*	280	1000	1200	133.3	380	483	580	2674	3209	352	97.0	74506
SHB-680L-315-10-3*_*_*	315			133.3	380	544	653	3008	3610	351	97.0	102446
SHB-680L-355-10-3*_*_*	355			133.3	380	625	750	3390	4068	351	97.0	102446
SHB-680H-400-10-3*_*_*	400			133.3	380	704	845	3820	4584	359	97.0	121073
SHB-680H-450-10-3*_*_*	450			133.3	380	792	950	4298	5158	359	97.0	121073
SHB-680H-560-10-3*_*_*	560			133.3	380	986	1183	5348	6418	359	97.0	152117
SHB-680L-400-15-3*_*_*	400	1500	1800	200	380	704	845	2547	3056	365	97.4	65193
SHB-680L-450-15-3*_*_*	450			200	380	792	950	2865	3438	354	97.4	74506
SHB-680L-560-15-3*_*_*	560			200	380	986	1183	3565	4278	351	97.4	102446
SHB-680H-710-15-3*_*_*	710			200	380	1250	1500	4520	5424	351	97.4	121073
SHB-680H-800-15-3*_*_*	800			200	380	1408	1690	5093	6112	354	97.4	133490

Installation Dimensions



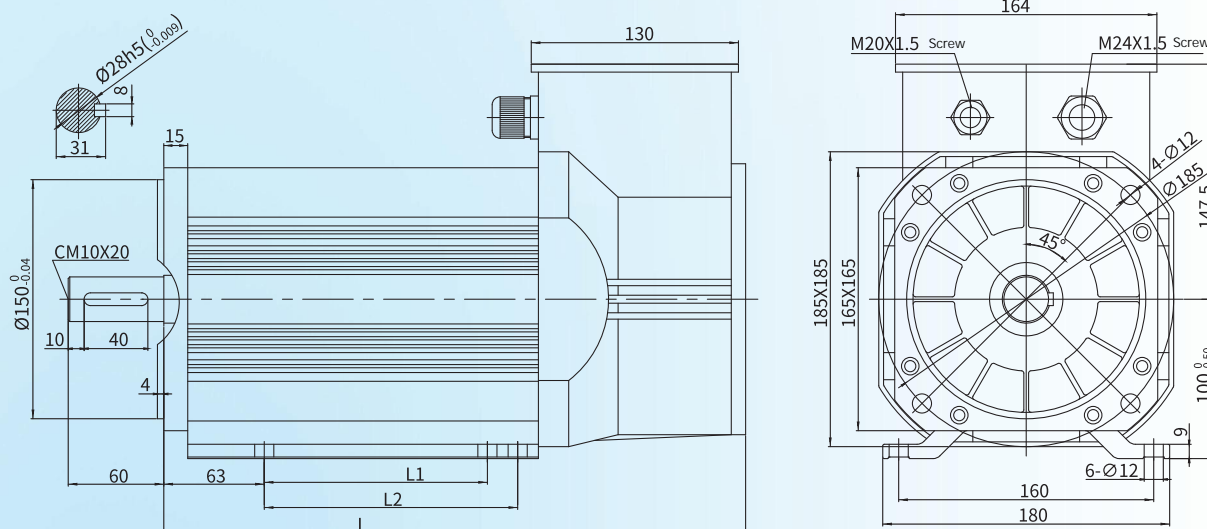
Frame Number	B1	B2	L	Frame Number	B1	B2	L
680L1	406	457	1200	16SL680H1	560	630	1480
680L2				16SL680H2			
				16SL680H3			
680L3				16SL680H4			



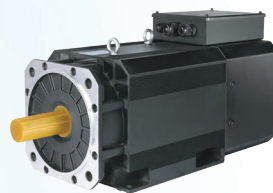
Specifications

Model Specification	Rated Power kW	Speed r/min		Freq. Hz	Vol. V	Current A		Torque Nm		Pole	Back EMF (V/1000rpm)	Rotor inertia kg.cm ²
		Rated speed	Max. speed	Rated Freq.	Rated Vol.	Rated Current	Max. Current	Rated Torque	Max. Torque			
SHC-165S-3R6-17-3*_**	3.6	1700	2200	113.33	380	6.6	7.92	20	24	8	218	58
SHC-165M-4R5-17-3*_**	4.5	1700	2200	113.33	380	8.2	9.84	25	30	8	216	78
SHC-165N-5R3-17-3*_**	5.3	1700	2200	113.33	380	9.7	11.64	30	36	8	218	107
SHC-165N-7R5-17-3*_**	7.5	1700	2200	113.33	380	13.8	16.56	42	50	8	221	126

Installation Dimensions



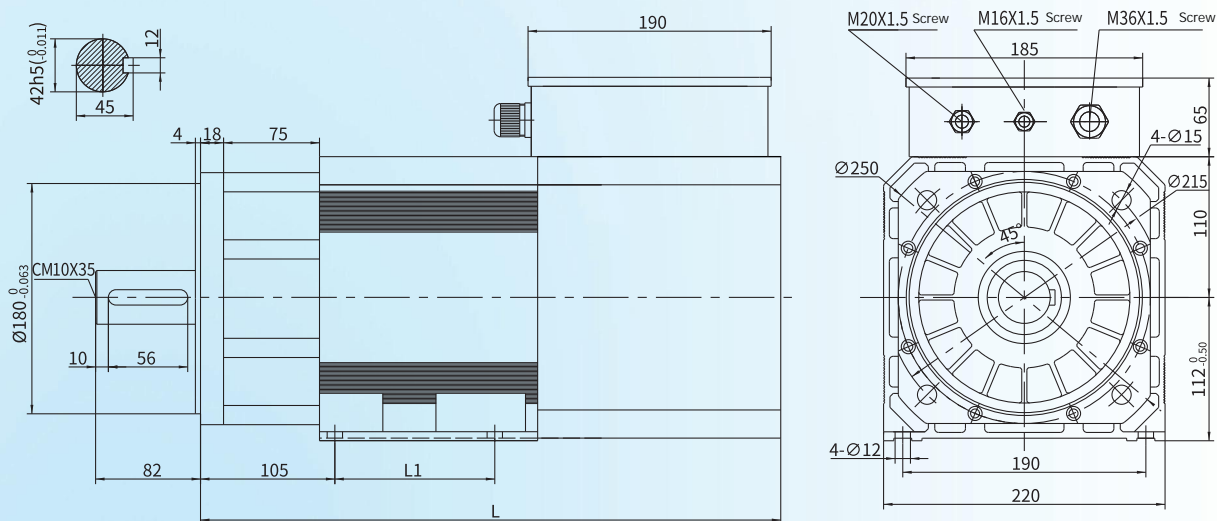
Frame Number	L	L1	L2
165S	310	70	84
165M	335	95	112
165N	365	140	159



Specifications

Model Specification	Rated Power kW	Speed r/min		Freq. Hz	Vol. V	Current A		Torque Nm		Pole	Back EMF (V/1000rpm)	Rotor inertia kg.cm ²
		Rated speed	Max. speed	Rated Freq.	Rated Vol.	Rated Current	Max. Current	Rated Torque	Max. Torque			
SHC-220S-9R8-17-3*_**	9.8	1700	2200	141.67	380	18.5	22.2	55	66	10	213	166
SHC-220M-014-17-3*_**	14.2	1700	2200	141.67	380	26.8	32.16	80	96	10	216	248
SHC-220L-018-17-3*_**	18.7	1700	2200	141.67	380	35.3	42.36	105	126	10	219	331
SHC-220H-023-17-3*_**	23.1	1700	2200	141.67	380	43.6	52.32	130	156	10	220	414
SHC-220E-027-17-3*_**	27.6	1700	2200	141.67	380	52	62.4	155	186	10	216	497
SHC-220F-032-17-3*_**	32.0	1700	2200	141.67	380	60.4	72.48	180	216	10	214	579

Installation Dimensions



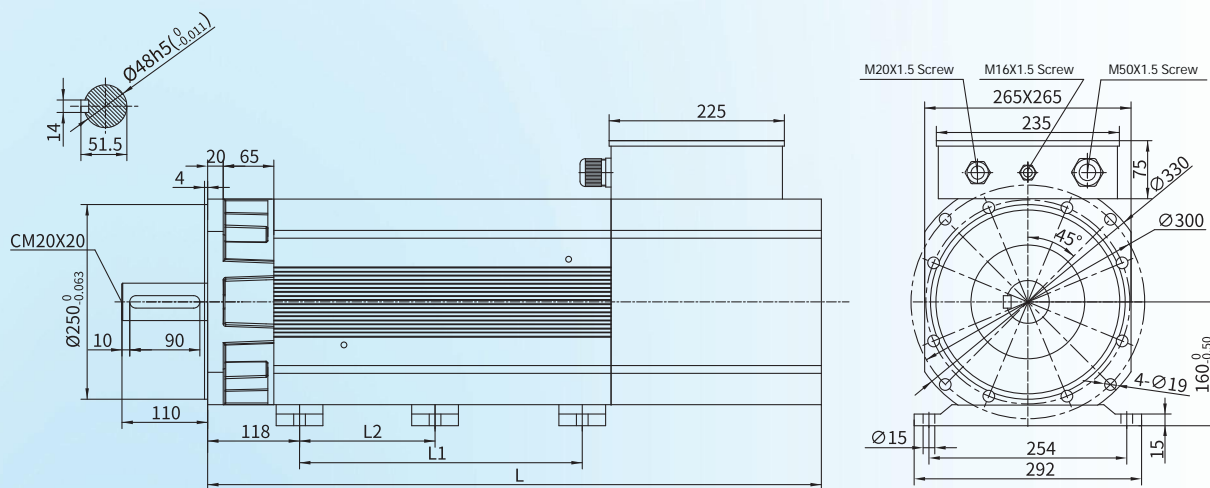
Frame Number	L1	L
220S	95	430
220M	125	460
220L	175	510
220H	225	560
220E	270	620



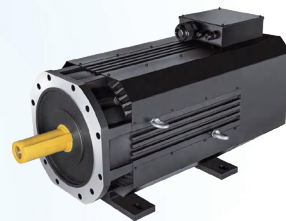
Specifications

Model Specification	Rated Power kW	Speed r/min		Freq. Hz	Vol. V	Current A		Torque Nm		Pole	Back EMF (V/1000rpm)	Rotor inertia kg.cm ²
		Rated speed	Max. speed	Rated Freq.	Rated Vol.	Rated Current	Max. Current	Rated Torque	Max. Torque			
SHC-265M-037-17-3*_**	37.4	1700	2200	141.67	380	64	76.8	210	252	10	225	966
SHC-265L-042-17-3*_**	42.7	1700	2200	141.67	380	73	87.6	240	288	10	225	1126
SHC-265H-048-17-3*_**	48.1	1700	2200	141.67	380	82	98.4	270	324	10	225	1287
SHC-265E-058-17-3*_**	58.7	1700	2200	141.67	380	100	120	330	396	10	229	1609
SHC-265F-069-17-3*_**	69.4	1700	2200	141.67	380	119	142.8	390	468	10	225	1931
SHC-265F-080-17-3*_**	80.1	1700	2200	141.67	380	137	164.4	450	540	10	233	2253

Installation Dimensions



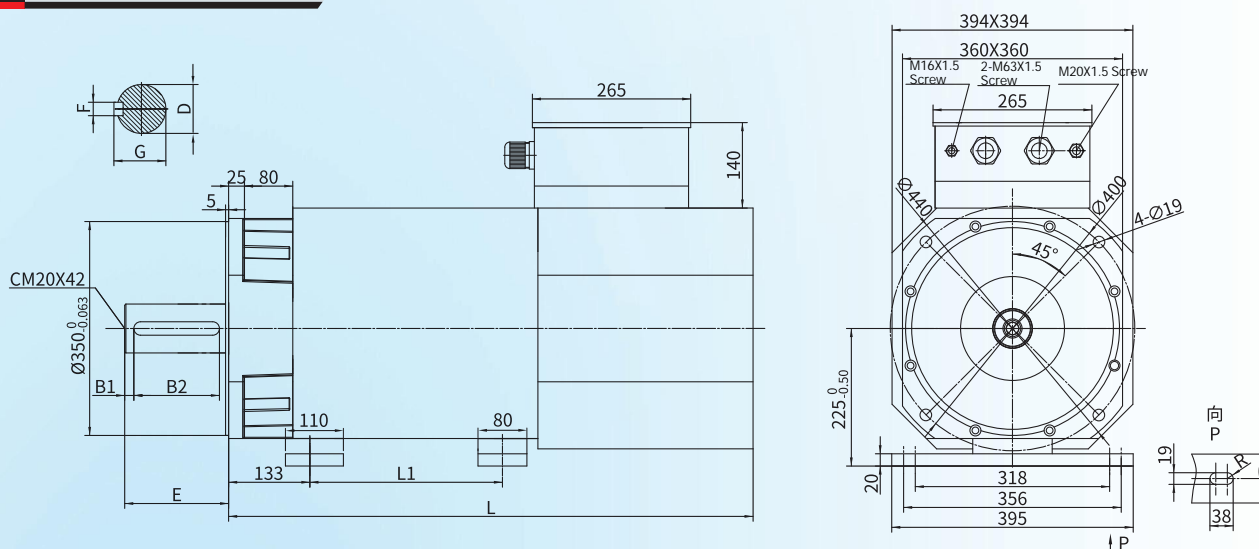
Frame Number	L	L1	L2
265M	605	173	/
265L	640	208	/
265H	675	243	/
265E	725	293	/
265F	795	363	174
265G	825	393	189



Specifications

Model Specification	Rated Power kW	Speed r/min		Freq. Hz	Vol. V	Current A		Torque Nm		Pole	Back EMF (V/1000rpm)	Rotor inertia kg.cm ²
		Rated speed	Max. speed			Rated Current	Max. Current	Rated Torque	Max. Torque			
SHC-360S-075-15-3*_**	75	1500	1800	100	380	135	162	478	573	8	230	2923
SHC-360M-090-15-3*_**	90	1500	1800	100	380	159	190.8	573	688	8	227	3672
SHC-360L-110-15-3*_**	110	1500	1800	100	380	193	231.6	700	840	8	227	4496
SHC-360H-132-15-3*_**	132	1500	1800	100	380	230	276	840	1008	8	229	5321
SHC-360E-160-15-3*_**	160	1500	1800	100	380	276	331.2	1019	1223	8	227	6745

Installation Dimensions



Frame Number	L	L1	D	F	G	E	B1	B2
360S	815	265	Ø75m6 (^{+0.030} / _{+0.011})	20	79.5	140	7.5	125
360M	865	315	Ø75m6 (^{+0.030} / _{+0.011})	20	79.5	140	7.5	125
360L	915	365	Ø80m6 (^{+0.030} / _{+0.011})	22	85	170	15	140
360H	975	425	Ø80m6 (^{+0.030} / _{+0.011})	22	85	170	15	140
360E	1045	495	Ø80m6 (^{+0.030} / _{+0.011})	22	85	170	15	140